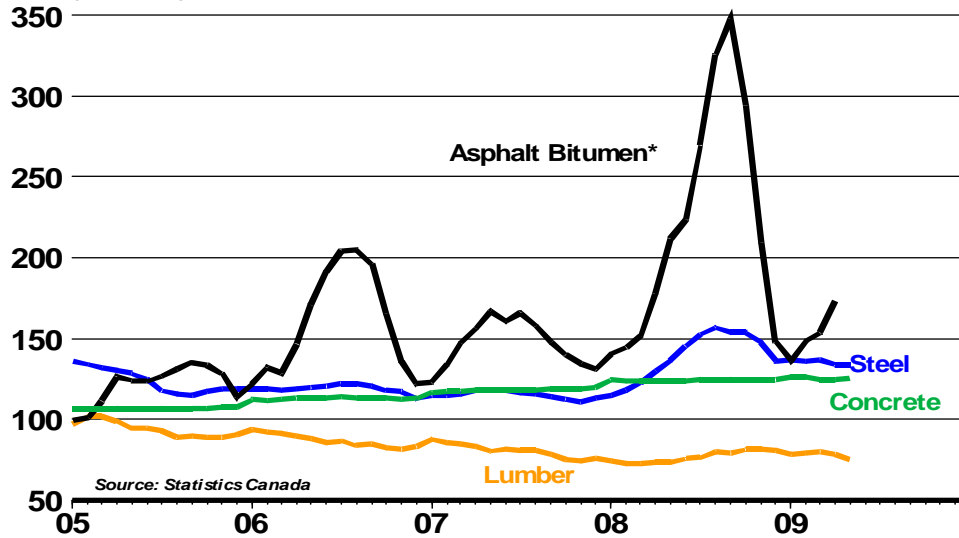




July 2009

Competitive Materials Cost Indices - Canada

(2002=100)



	2007	2008	2008	2009					2009
			Dec	Jan	Feb	Mar	Apr	May	YTD
Primary Steel Products	111.3	134.4	131.8	132.3	131.7	132.3	129.4	129.2	131.0
% Change Year-Ago	-3.1%	20.7%	20.6%	19.1%	15.2%	11.6%	3.3%	-2.0%	8.9%
Lumber and Timber	67.9	64.6	67.9	66.0	66.9	67.0	65.7	63.1	65.7
% Change Year-Ago	-7.2%	-4.9%	6.8%	5.4%	9.3%	9.3%	6.0%	1.8%	6.3%
Asphalt Bitumen*	174.4	261.5	175.4	161.7	176.3	182.2	205.4	N/A	181.4
% Change Year-Ago	-8.1%	49.9%	12.8%	-2.8%	2.9%	1.4%	-2.5%	N/A	-0.3%
Ready Mix Concrete	129.8	136.3	136.7	138.3	138.2	137.2	137.0	138.1	137.8
% Change Year-Ago	4.7%	5.0%	4.1%	1.2%	1.8%	1.0%	0.7%	1.3%	1.2%
Sand and Gravel	144.6	157.3	157.3	158.8	158.8	158.8	158.8	158.8	158.8
% Change Year-Ago	7.8%	8.8%	7.1%	1.0%	1.0%	1.0%	1.0%	1.0%	1.0%
Crushed Stone	137.9	142.5	142.6	146.7	146.6	146.6	148.8	148.8	147.5
% Change Year-Ago	4.5%	3.4%	3.9%	5.3%	5.0%	3.6%	2.8%	3.5%	4.0%

*Asphalt bitumen - weighted index - 90% solid and 10% liquid bitumen.

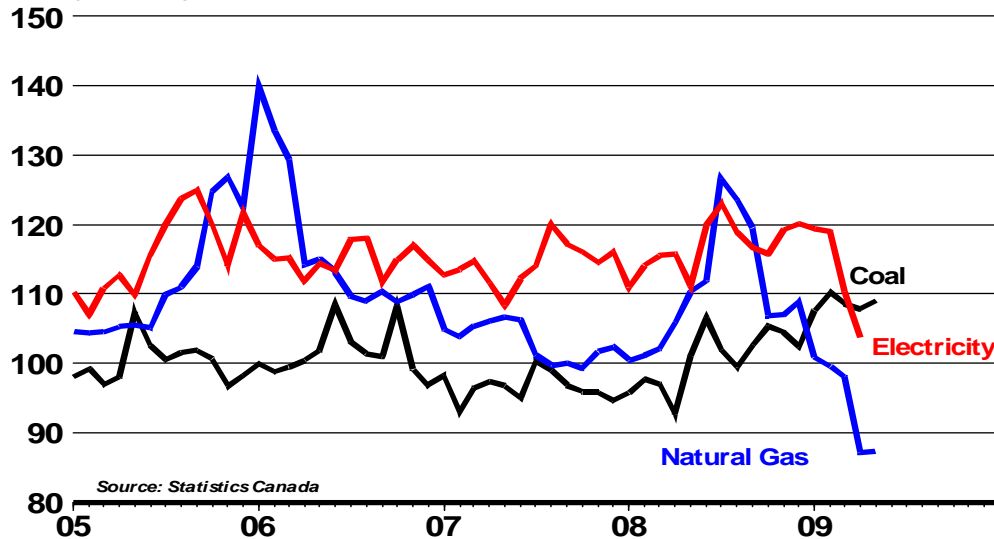
Up against sharp increases last year, the index for primary steel products dipped negative for the first time this year with expectations for this trend to continue for most of this year. Lackluster demand continues to add downside pressure to steel products pricing. On a year-ago basis, growth in the lumber index remains positive yet month-month the trend is decidedly negative. The asphalt index declined 2.5% in April when measured against the high prices reported last year, however the more significant trend is in the month-month index gains which have advanced steadily since the beginning of the year. Revisions to the index for ready mix concrete indicate price movement was not as strong as previously indicated trimming nearly a half a point off the previous year-to-date measure.

PCA Economic Research provides this information to help member companies, staff, and promotional allies evaluate and improve the promotion of concrete and other cement-based products.



July 2009

Energy Conditions - Canada (2002=100)



	2007	2008	2008	2009					2009
			Dec	Jan	Feb	Mar	Apr	May	YTD
Coal	94.0	97.8	99.6	104.7	107.2	105.6	104.9	106.1	105.7
% Change Year-Ago	-4.9%	4.1%	8.3%	12.5%	12.7%	11.9%	16.4%	7.9%	12.2%
Natural Gas	221.5	237.1	234.0	216.8	214.0	210.7	187.2	187.7	203.3
% Change Year-Ago	-11.9%	7.0%	6.4%	0.5%	-1.5%	-3.9%	-17.8%	-20.8%	-9.0%
Electricity	130.9	133.8	137.6	136.8	136.3	126.4	118.9	N/A	129.6
% Change Year-Ago	-0.8%	2.2%	3.5%	7.5%	4.2%	-4.5%	-10.4%	N/A	-0.9%
Heavy Fuel Oil	253.5	341.7	183.4	185.2	205.3	228.5	237.4	N/A	214.1
% Change Year-Ago	9.1%	34.8%	-38.2%	-40.8%	-32.6%	-31.5%	-34.8%	N/A	-34.9%
Light Fuel Oil	234.0	320.3	215.0	215.0	199.6	190.6	197.3	N/A	200.6
% Change Year-Ago	5.5%	36.9%	-22.3%	-23.0%	-29.9%	-40.4%	-41.7%	N/A	-34.3%
LPG	304.1	364.5	216.5	238.7	252.3	212.9	180.7	N/A	221.2
% Change Year-Ago	11.4%	19.9%	-43.1%	-37.2%	-30.6%	-42.9%	-53.4%	N/A	-41.2%

The index for coal advanced from the April observation yet dipped below a double-digit pace for the first time this year. On a year-ago basis, prices for natural gas continue to deteriorate. The index for industrial electricity was not updated, however, year-ago declines are expected to materialize as new information is released. The indexes for heavy and light fuel oil both advanced from March observations, however, on a year-ago basis continue to reflect sharp price declines. The monthly jump is likely a reflection of recently higher oil prices.

PCA Economic Research provides this information to help member companies, staff, and promotional allies evaluate and improve the promotion of concrete and other cement-based products.